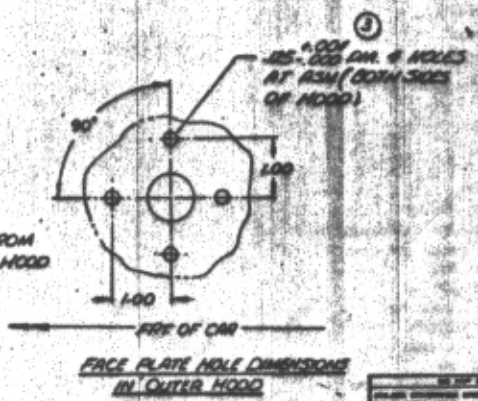
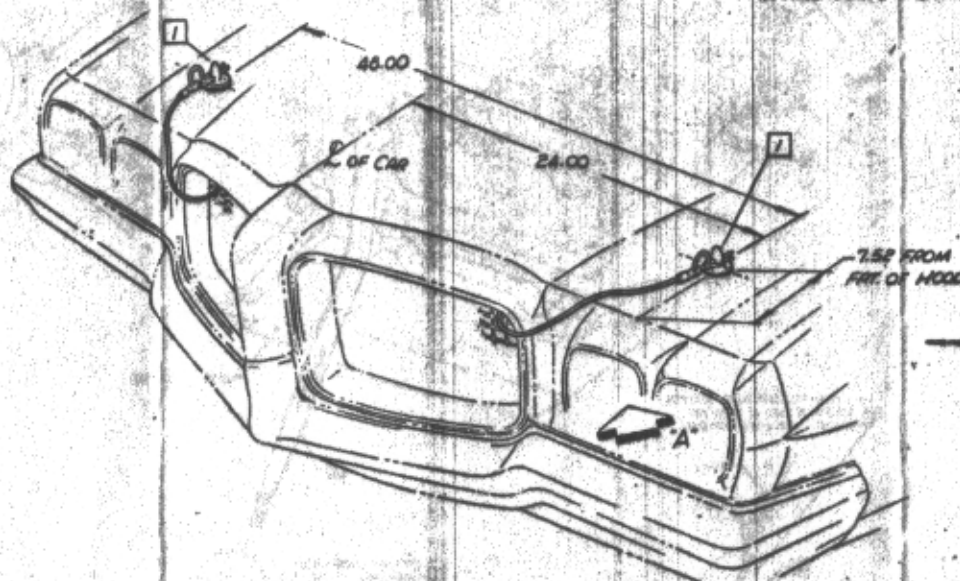
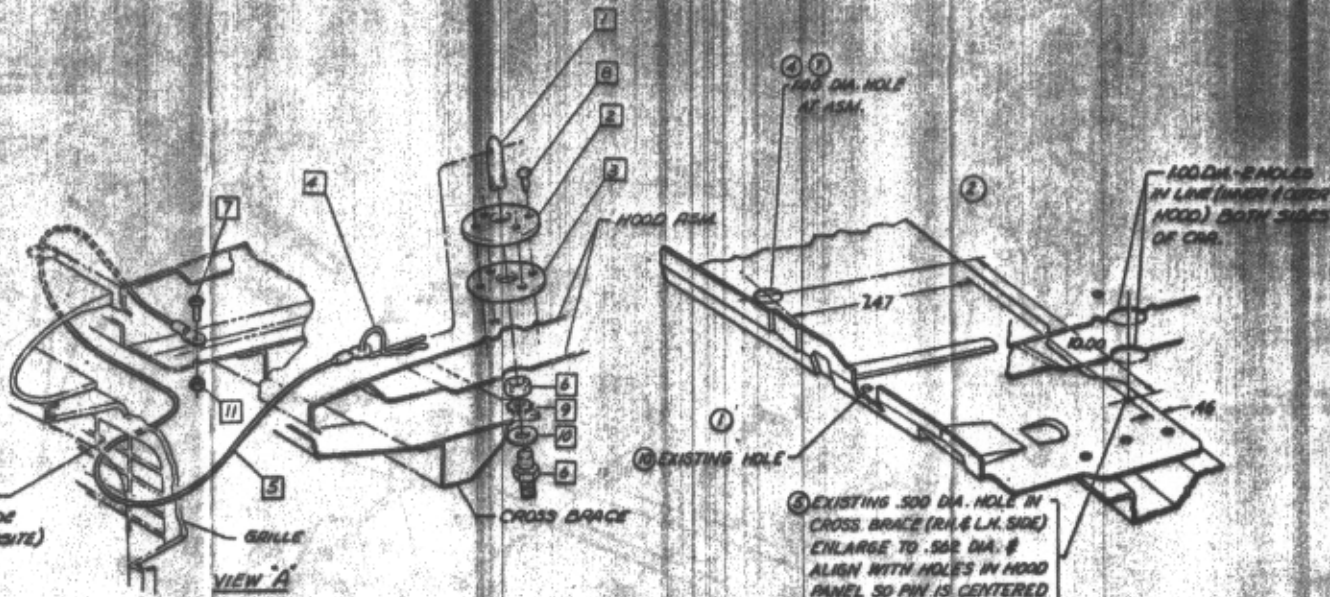


- ① 7 48501 PIN
- ② 48502 PLATE
- ③ 48503 GASKET
- ④ 7 48504 PIN
- ⑤ 48505 LANYARD
- ⑥ 120370 NUT
- ⑦ 7 156867 SCREW
- ⑧ 7 147515 SCREW
- ⑨ 135429 WASHER
- ⑩ 485288 WASHER
- ⑪ 271166 NUT

ROUTE LANYARD THRU UPPER SLOT, END ROW FROM LEFT SIDE OF GRILLE (R.H. SYMM. OPPOSITE)



SYMBOLS INDICATE:
 ○ REVISION
 □ PART DESIGNATION
 △ TORQUE

484883

REVISIONS	
NO.	DESCRIPTION
1	ISSUED FOR PRODUCTION
2	ISSUED FOR PRODUCTION
3	ISSUED FOR PRODUCTION
4	ISSUED FOR PRODUCTION
5	ISSUED FOR PRODUCTION
6	ISSUED FOR PRODUCTION
7	ISSUED FOR PRODUCTION
8	ISSUED FOR PRODUCTION
9	ISSUED FOR PRODUCTION
10	ISSUED FOR PRODUCTION
11	ISSUED FOR PRODUCTION
12	ISSUED FOR PRODUCTION
13	ISSUED FOR PRODUCTION
14	ISSUED FOR PRODUCTION
15	ISSUED FOR PRODUCTION
16	ISSUED FOR PRODUCTION
17	ISSUED FOR PRODUCTION
18	ISSUED FOR PRODUCTION
19	ISSUED FOR PRODUCTION
20	ISSUED FOR PRODUCTION
21	ISSUED FOR PRODUCTION
22	ISSUED FOR PRODUCTION
23	ISSUED FOR PRODUCTION
24	ISSUED FOR PRODUCTION
25	ISSUED FOR PRODUCTION
26	ISSUED FOR PRODUCTION
27	ISSUED FOR PRODUCTION
28	ISSUED FOR PRODUCTION
29	ISSUED FOR PRODUCTION
30	ISSUED FOR PRODUCTION
31	ISSUED FOR PRODUCTION
32	ISSUED FOR PRODUCTION
33	ISSUED FOR PRODUCTION
34	ISSUED FOR PRODUCTION
35	ISSUED FOR PRODUCTION
36	ISSUED FOR PRODUCTION
37	ISSUED FOR PRODUCTION
38	ISSUED FOR PRODUCTION
39	ISSUED FOR PRODUCTION
40	ISSUED FOR PRODUCTION
41	ISSUED FOR PRODUCTION
42	ISSUED FOR PRODUCTION
43	ISSUED FOR PRODUCTION
44	ISSUED FOR PRODUCTION
45	ISSUED FOR PRODUCTION
46	ISSUED FOR PRODUCTION
47	ISSUED FOR PRODUCTION
48	ISSUED FOR PRODUCTION
49	ISSUED FOR PRODUCTION
50	ISSUED FOR PRODUCTION
51	ISSUED FOR PRODUCTION
52	ISSUED FOR PRODUCTION
53	ISSUED FOR PRODUCTION
54	ISSUED FOR PRODUCTION
55	ISSUED FOR PRODUCTION
56	ISSUED FOR PRODUCTION
57	ISSUED FOR PRODUCTION
58	ISSUED FOR PRODUCTION
59	ISSUED FOR PRODUCTION
60	ISSUED FOR PRODUCTION
61	ISSUED FOR PRODUCTION
62	ISSUED FOR PRODUCTION
63	ISSUED FOR PRODUCTION
64	ISSUED FOR PRODUCTION
65	ISSUED FOR PRODUCTION
66	ISSUED FOR PRODUCTION
67	ISSUED FOR PRODUCTION
68	ISSUED FOR PRODUCTION
69	ISSUED FOR PRODUCTION
70	ISSUED FOR PRODUCTION
71	ISSUED FOR PRODUCTION
72	ISSUED FOR PRODUCTION
73	ISSUED FOR PRODUCTION
74	ISSUED FOR PRODUCTION
75	ISSUED FOR PRODUCTION
76	ISSUED FOR PRODUCTION
77	ISSUED FOR PRODUCTION
78	ISSUED FOR PRODUCTION
79	ISSUED FOR PRODUCTION
80	ISSUED FOR PRODUCTION
81	ISSUED FOR PRODUCTION
82	ISSUED FOR PRODUCTION
83	ISSUED FOR PRODUCTION
84	ISSUED FOR PRODUCTION
85	ISSUED FOR PRODUCTION
86	ISSUED FOR PRODUCTION
87	ISSUED FOR PRODUCTION
88	ISSUED FOR PRODUCTION
89	ISSUED FOR PRODUCTION
90	ISSUED FOR PRODUCTION
91	ISSUED FOR PRODUCTION
92	ISSUED FOR PRODUCTION
93	ISSUED FOR PRODUCTION
94	ISSUED FOR PRODUCTION
95	ISSUED FOR PRODUCTION
96	ISSUED FOR PRODUCTION
97	ISSUED FOR PRODUCTION
98	ISSUED FOR PRODUCTION
99	ISSUED FOR PRODUCTION
100	ISSUED FOR PRODUCTION

INSTALLATION DRAWING
 HOOD EXTENDED OPTION
 484883